

Offline Firmware Update AXIstorage Li SV1 / Li SV2

The actions described in these instructions may only be carried out by trained electricians with knowledge of the installation and commissioning of the electrical system and how to deal with the hazards involved. Disconnect the battery storage unit from the inverter before updating. Only operate the laptop for the connection to the storage unit with the battery.

Set up:

The BMS must be switched on for the update. For the Li SV1, a system with at least two battery modules must be set up for this purpose; for the Li SV2, a system with at least one battery module is required..

All cables between the inverter and the storage should be removed before the update (Attention, switch off the system before).

Wiring:

Prefabricated cables from RJ45 to USB to connect the Laptop to the BMS can be requested from AXITEC. Connect both cables and fasten the screws on the connector. Plug the USB connector into the laptop and the RJ45 connector to the **RS232** port of the BMS.



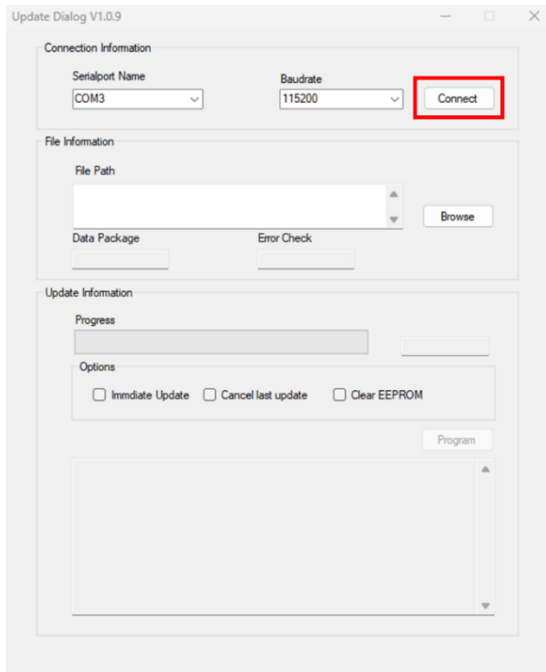
Performing the Update:

- 1) Download Update-Tool and Firmware
<https://www.axitecsolar.com/downloads-stromspeicher-software>
- 2) Unzip the folder

- 3) Start Update Tool

Config	08.05.2023 09:57	Dateiordner	
Update log	14.11.2022 13:21	Dateiordner	
stdole.dll	08.05.2023 09:57	Anwendungserwe...	32 KB
Update Tool	08.05.2023 09:57	Anwendung	284 KB
Update Tool.exe.config	08.05.2023 09:57	CONFIG-Datei	1 KB
Update Tool.pdb	08.05.2023 09:57	PDB-Datei	366 KB
Update Tool.vshost	08.05.2023 09:57	Anwendung	23 KB
Update Tool.vshost.exe.config	08.05.2023 09:57	CONFIG-Datei	1 KB
Update Tool.vshost.exe.manifest	08.05.2023 09:57	MANIFEST-Datei	1 KB

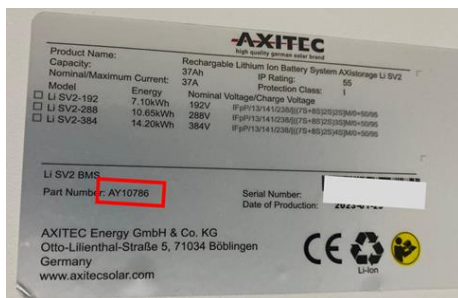
4) Click "Connect"



5) Click "Browse" select correct firmware version:

Battery type	Item Number BMS	Identification	Firmware
Li SV1	AY10785	Link0 and Link1 existing	ForceHB_H1_CMU_V1.6_20230706_Crc.bin
Li SV1	AY10729		ForceH1_CMU_A_V1.8_Crc(1).bin
Li SV2	AY10786	Link0 and Link1 existing	ForceHB_H2_CMU_V1.6_Crc.bin
Li SV2	AY10732		ForceH2_CMU_A_V1.8_Crc.bin

Before carrying out the update, check which item you have in front of you and whether the selected firmware matches this item. Installing the wrong firmware can damage the unit irreparably!



You find the Item number on the label on top of the BMS.

6) Click „Program“ and wait until the update is finished. After the update, an automatic restart is carried out.